

Medical Sensor Solutions for Early and Reliable Diagnosis

ams sensor solutions

Dr. Filip Frederix, Senior Marketing Manager Smart Medical Devices

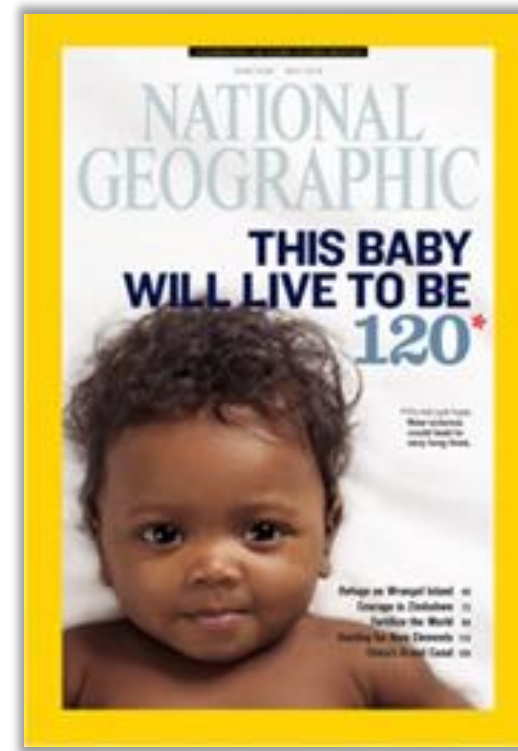
Dr. Michael Leitner, VP & GM Medical Solutions

Electronica 2018



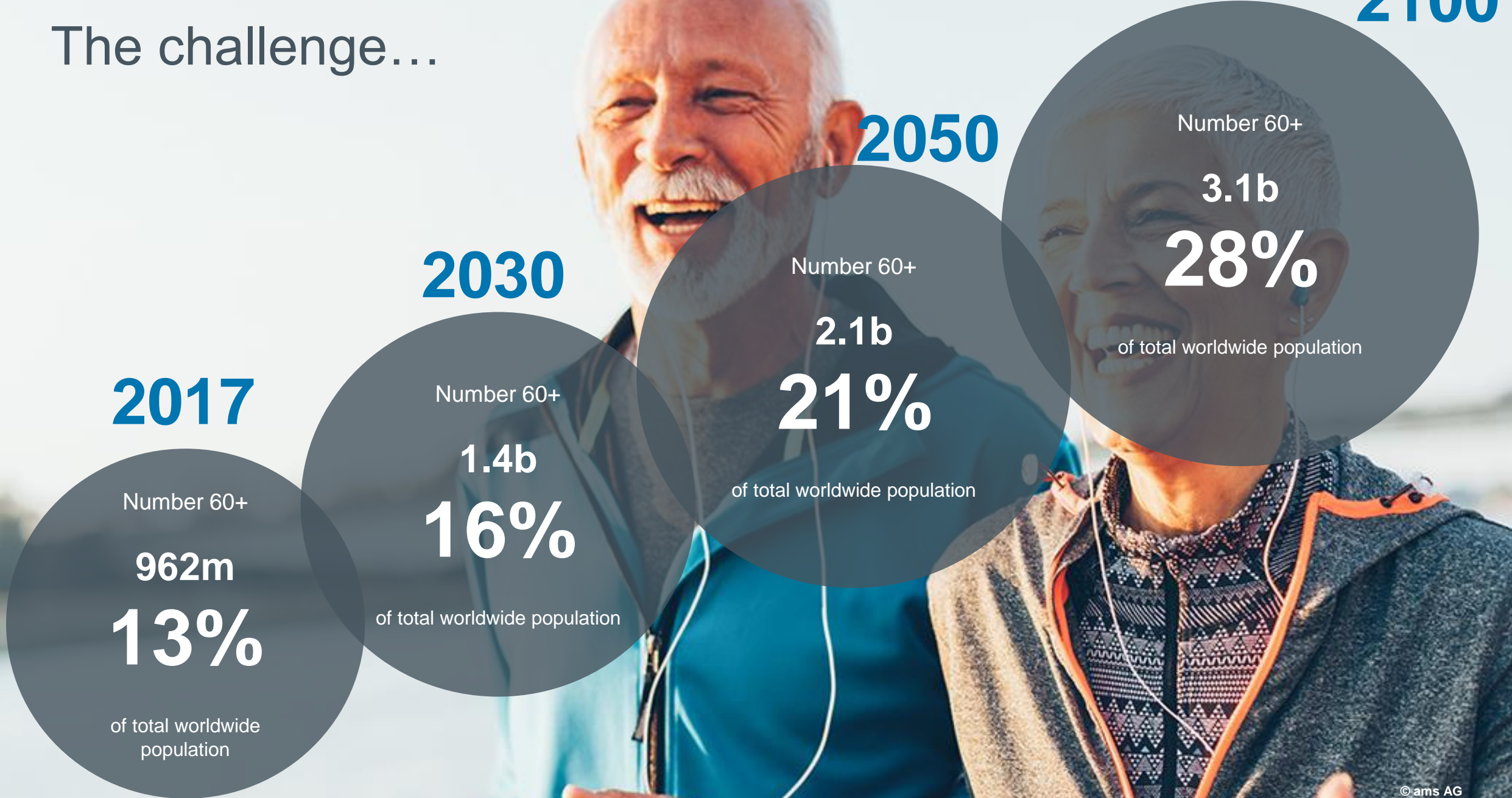
The good news ...

May 2013

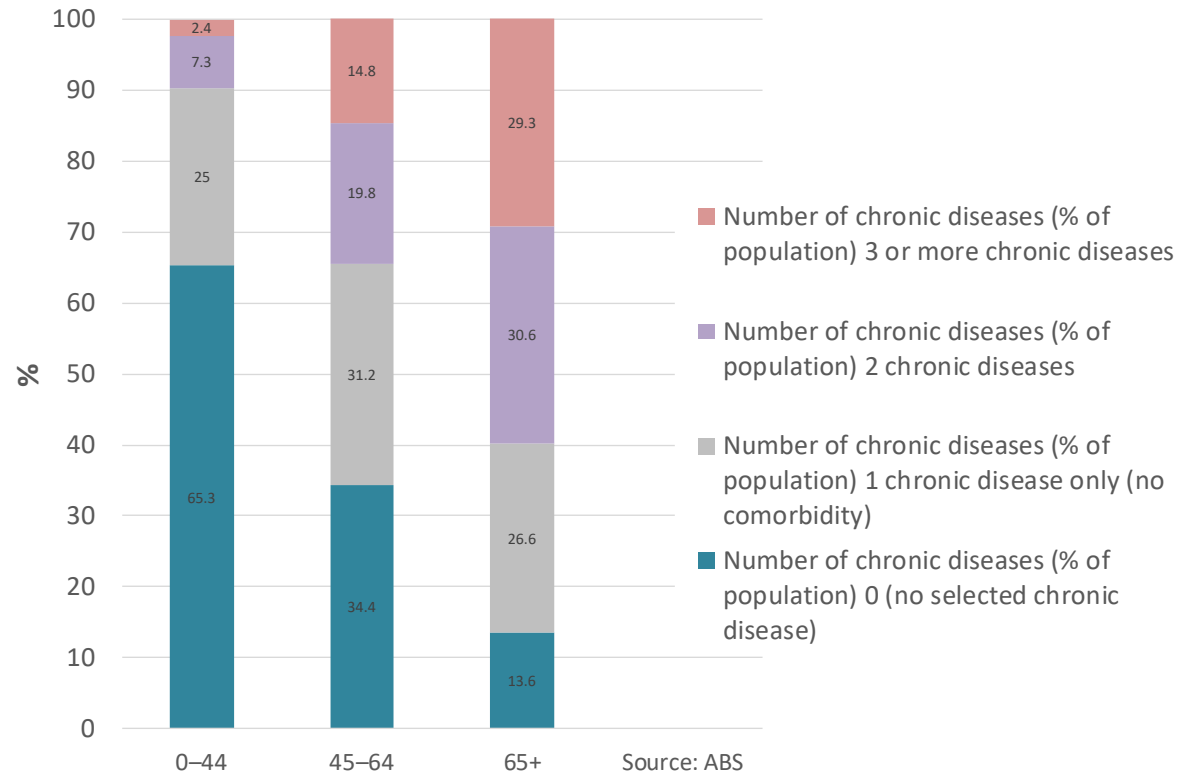


2100

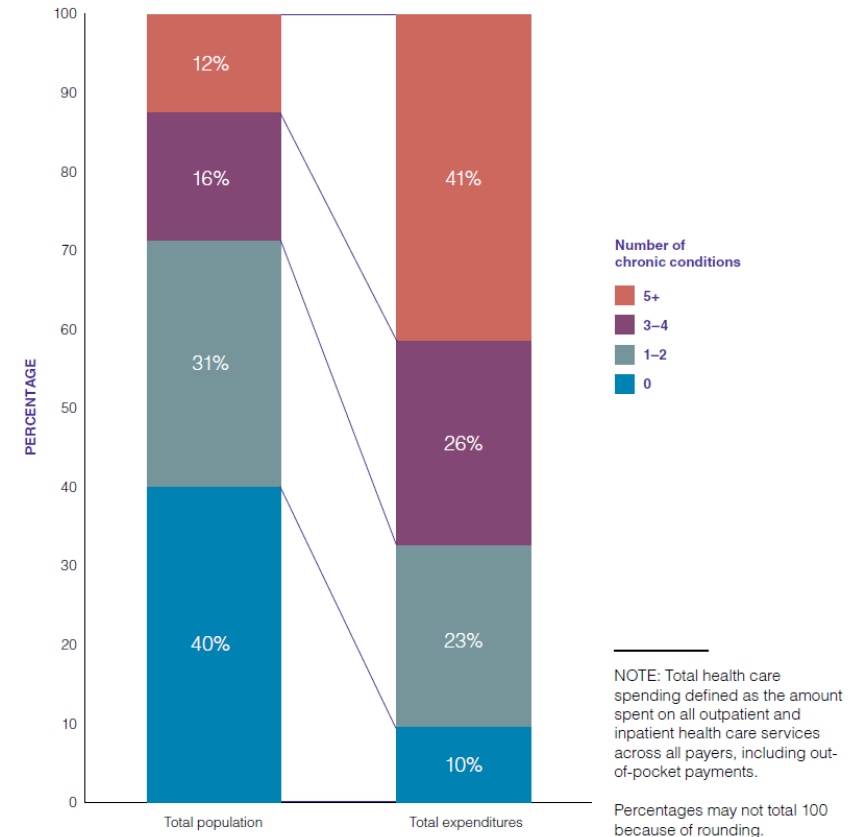
The challenge...



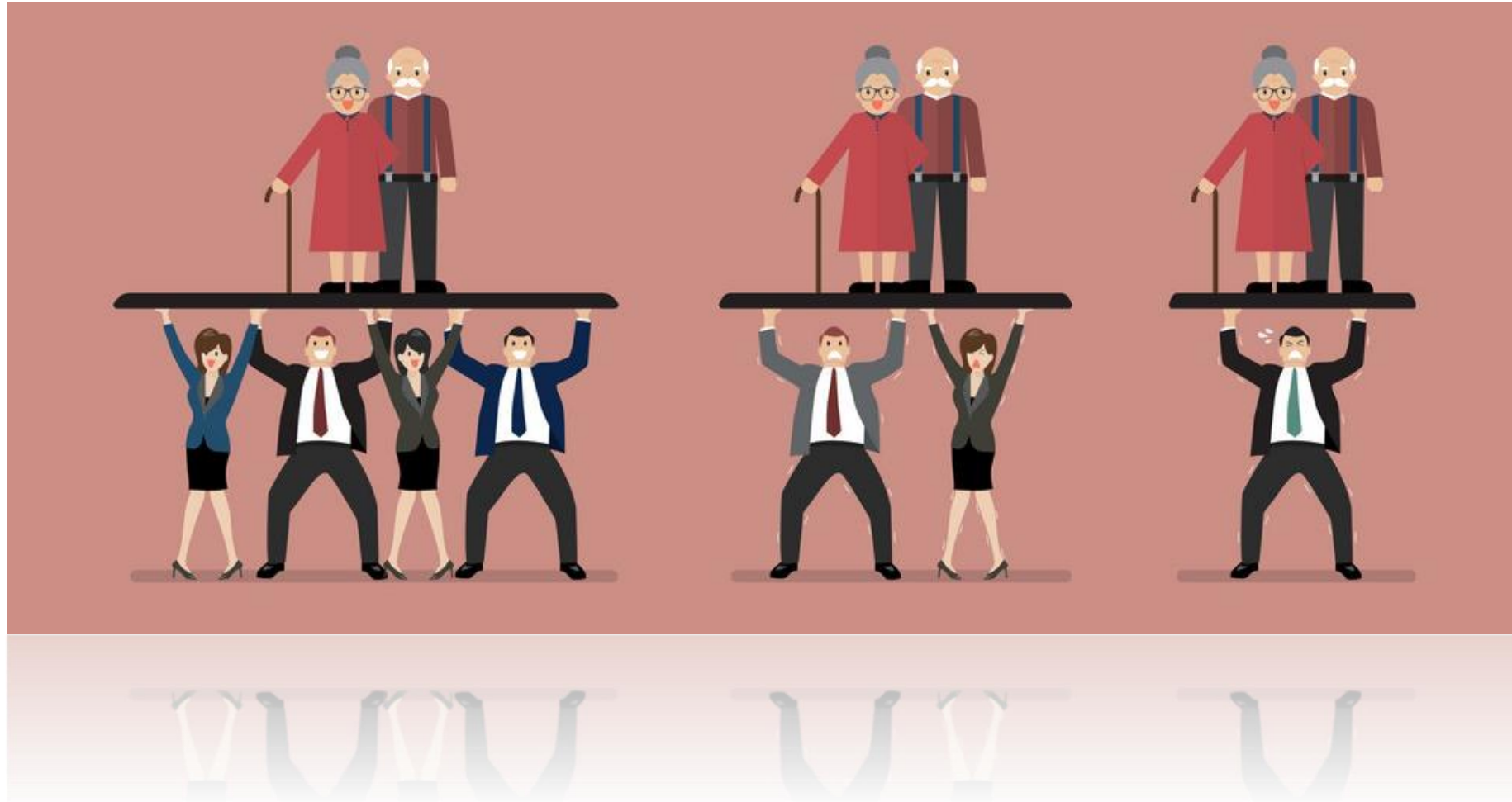
The bad news ...



Source: ABS 2015 (Table 18.3); Table S3.3.2.

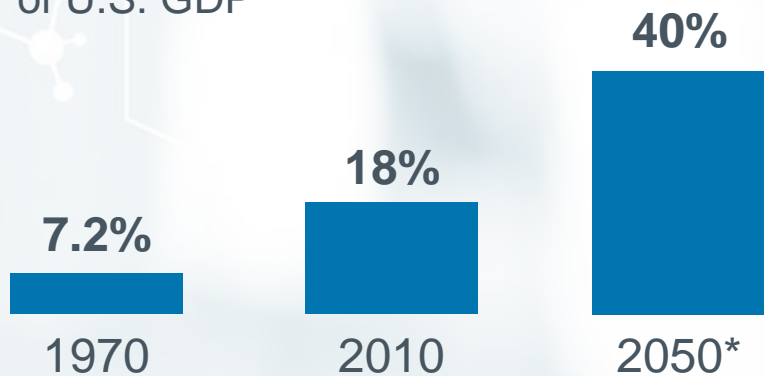


The challenge...



The challenge...

Health care costs as a percentage of U.S. GDP



Annual U.S. health care spending



What can we do about this?



Prevention

Sensors solutions are crucial!



Advice on your physical activity

Personalized prevention programs

and

Health monitoring

Food (quality) advice

and

Environmental feedback

- 2% spent on diagnostic but influencing 70% of treatment decisions → earlier diagnostics?
- **\$10 per person per year** on prevention could yield **\$16 billion** in medical cost savings annually within 5 years.
- **1\$ investment makes \$5.60 gain**, without considering the additional gains in worker productivity and enhanced quality of life.

Decentralized testing

From hospital testing to testing at GP office or home testing

Now



Towards



Home Testing



Non-invasive monitoring

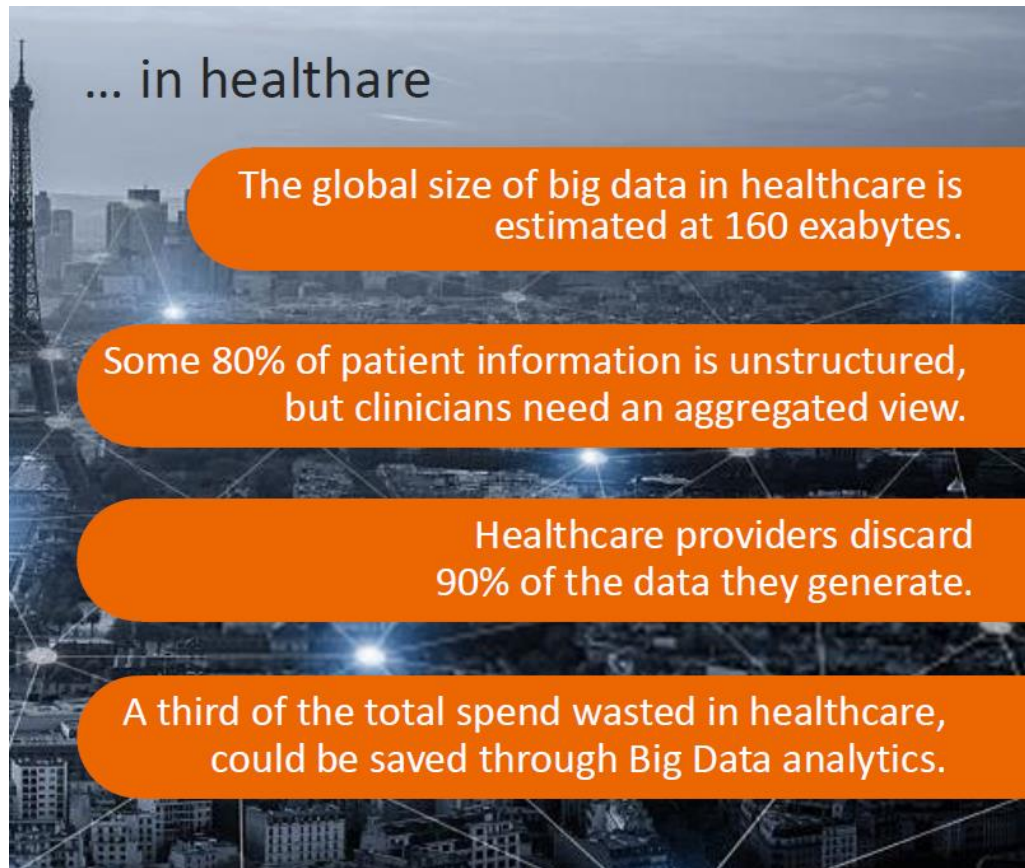


mysugarwatch.com

Big Data & Artificial Intelligence

Can play in important role in future healthcare

> 100.000 Health Apps are available for Smart Phones



Wednesday, May 2, 2018

Artificial intelligence better than most human experts at detecting cause of premie blindness

New algorithm could help overcome shortage of physicians trained in disease diagnosis

Man against machine: AI is better than dermatologists at diagnosing skin cancer

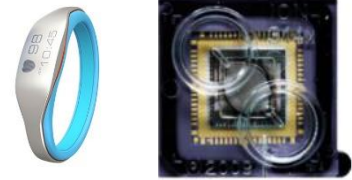
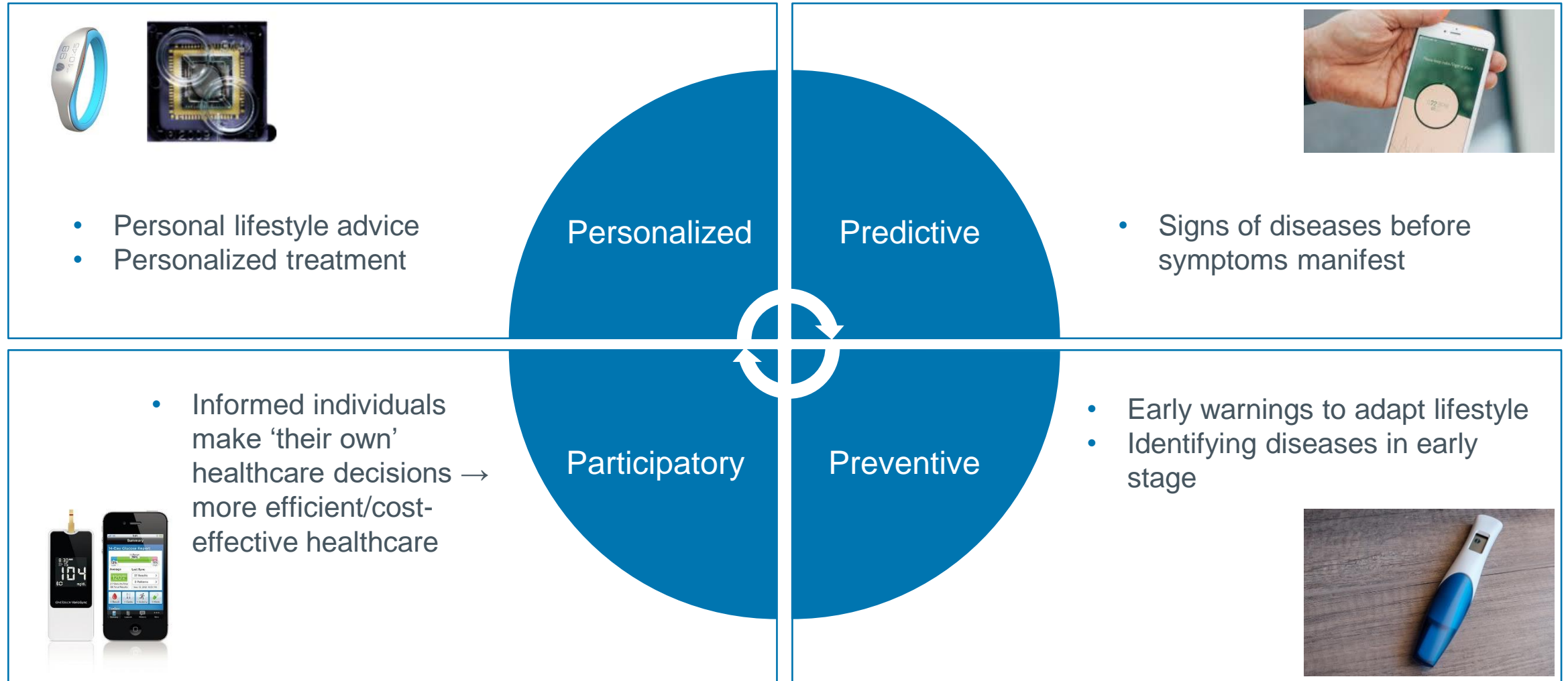
Date: May 28, 2018

Source: European Society for Medical Oncology

Summary: Researchers have shown for the first time that a form of artificial intelligence or machine learning known as a deep learning convolutional neural network (CNN) is better than experienced dermatologists at detecting skin cancer.

Towards 4P medicine

Sensors solutions are key!



Sensor Technology Demands

Features

- Accurate sensors
- Connection to healthcare professional/database
- Actionable output and/or data analysis
- Used at home or by nonprofessional

Technology demands

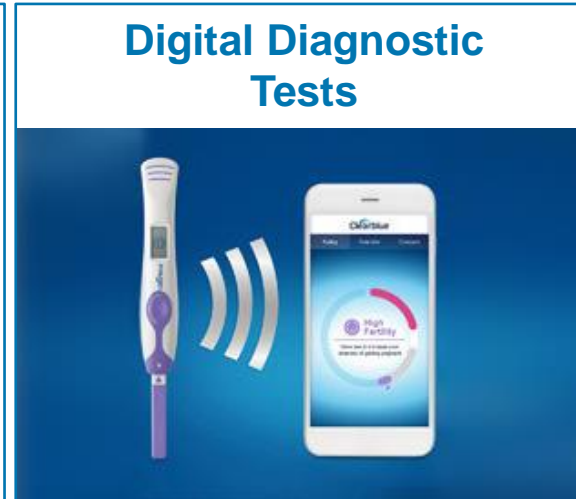
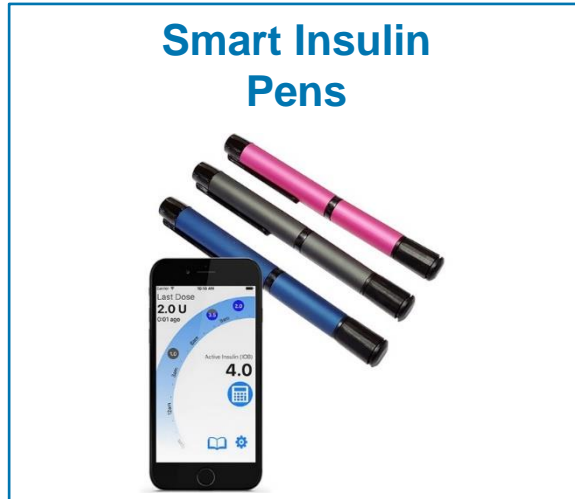
- Miniaturized, cost effective, sensitive, selective, sensors
- Connectivity
- Big data, AI, ...
- Consumer like technology



Benefits

- Prevent diseases
- Follow up the treatment
- Decentralized healthcare
- ...

Recent example of smart sensor solutions



Benefits for patients:

- Better follow-up treatment
- Better accuracy
- But also potential future better treatment due to big data / AI

Medical Sensor Solutions

Smart Monitoring, Effective Data versus Doctor Skills, Sensors + Usability

Dr. Michael Leitner VP & GM

Sensing is life.

Sensors – an integral part of the digital transformation in Healthcare



The Clinical and Medical Practitioners Environment



The Job of Sensor Solutions in the Clinical and Medical Practitioners Environment



- Minimize Cost of Ownership
- Enable Sensing principles to less invasive methods, minimizing the cost of accurate diagnosis to the patient
- Get the clinical lab into the doctors office for immediate diagnosis instead of days waiting time
- Maximize the knowledge retrieved from raw measurement data, to enable medical doctors in as accurate as possible diagnosis.

The Clinical and Medical Practitioners Environment

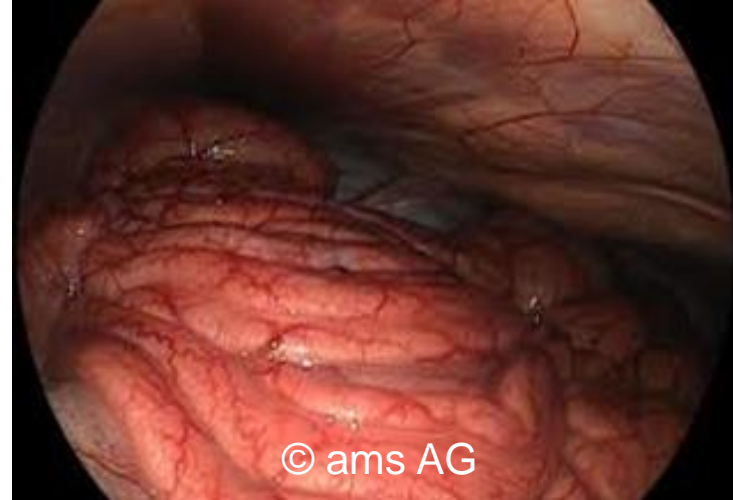


Examples for Optimized Sensor Solutions in the clinical and practitioners environment



Computed Tomography:

- Clear images at lowest dose
- System and system environment cost minimization
- Artificial Intelligence and Cloud Services for efficient Pre-Diagnosis



Endoscopy:

- Cost of Ownership reduction by using high volume technology
- Reducing infections by disposable technology
- Multiple-Sensor Technology integration to enable multiple Senses. (Capacitive, Temperature, Spectroscopy,...)



Bringing the Lab to the Sample:

- Bio-chemical
- IR - Spectroscopy
- Photoacoustic
- Raman Spectroscopy

Your Personal Environment

The Job of Sensor Solutions at the Medical Practitioner



- “Downsize” and “down price” sensors to fit into our everyday devices (bathroom, car, watch, earbuds, shoes, ...)
- Combine sensor signals and generate pre-diagnosis information for you and your doctor
- **Securely communicate the personal data and guaranty data access by your approved and trusted parties**

Your personal environment

Examples for optimized sensor solutions in your personal environment



On and around your body:

- Heart Rate, HRV, ECG, blood pressure, arterial elasticity, vagal tone
- SpO₂, skin temperature, Respiration
- Aerobe threshold (O₂ / CO₂ breath analysis)
- Emotional stress / depression (audio sensing)



In your body:

- Breath analysis (infrared/raman spectroscopy)
- Skin analysis (spectral sensing)
- Urine analysis (infrared spectroscopy)
- Blood analysis (spectroscopy)



Around your body:

- Sunlight radiation (UVA, UVB)
- Circadian lighting (color sensing)
- Food quality (spectral sensing)



Semiconductors in Healthcare



Connect with us:

Filip.Frederix@ams.com

Michael.Leitner @ams.com

Thank you!

Please visit our website

www.ams.com

Follow us on social media:

