

Product Document



Quick Start Guide

QG001024

TMD3721

TMD3721 EVM

ALS/Color and Proximity Sensor Module for Behind
OLED Applications

v1-00 • 2022-May-30

Content Guide

1	Out of the Box.....	3
2	Software Installation	4
3	Connect Hardware.....	7
4	Start the Application	8
5	Uninstall Application.....	9

1 Out of the Box



For a detailed description of the TMD3721 Evaluation Kit, please refer to User Guide:

- TMD3721 EVM User Guide (UG001034)

Each TMD3721 Evaluation Kit comes with the following components:

**Figure 1:
Evaluation Kit Contents**



No.	Item	Description
1	TMD3721 EVM Daughter Card	PCB with TMD3721 sensor installed
2	EVM Controller Board	Used to communicate USB-to-I ² C
3	USB Cable (A to Micro-B)	Connects EVM controller to PC
4	Flash Drive	Contains application and document installer

2 Software Installation

1. Plug the flash drive into an unused USB port
2. Double-click the Setup.exe file on the flash drive, or click Start > Run and type E:Setup.exe and press Enter. **IMPORTANT:** Use the appropriate drive letter in the above command to install the software. Flash Drive will commonly be assigned the next available drive letter for example C: hard drive, D: CD-ROM, E: flash drive
3. The Setup Wizard will open and guide you through the installation of the TMD3721 EVM host software, (Figure 2 through Figure 8).
4. The EVM Controller board requires the installation of FTDI CDM drivers. If these drivers are not installed on your machine, this setup will automatically launch the installer for the FTDI drivers.
5. At the end of the installation, click Finish to exit the setup.

Figure 2:
Welcome Screen

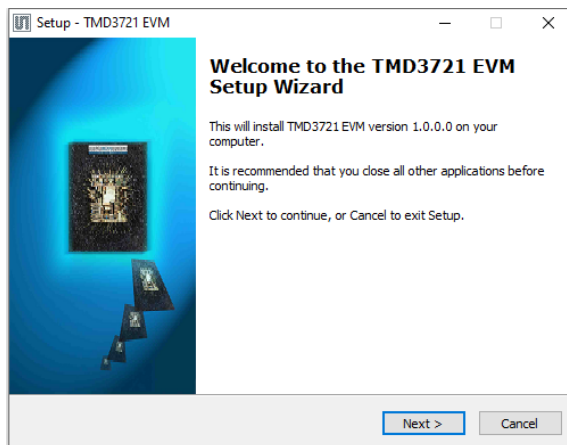


Figure 3:
Liability Disclaimer

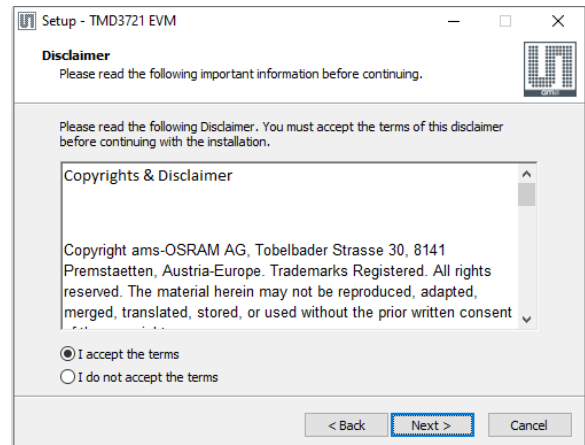


Figure 4:
Select Installation Location

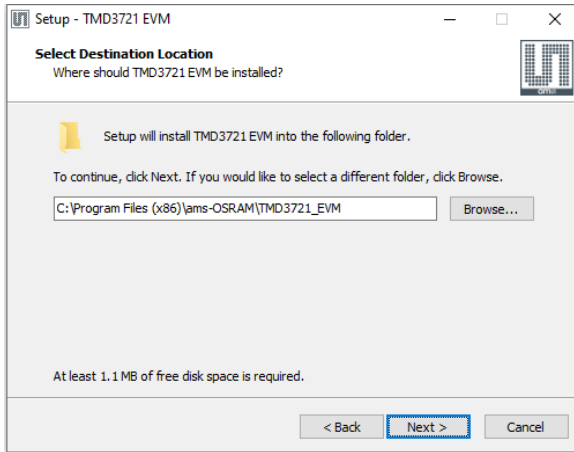


Figure 5:
Select Start Menu Folder

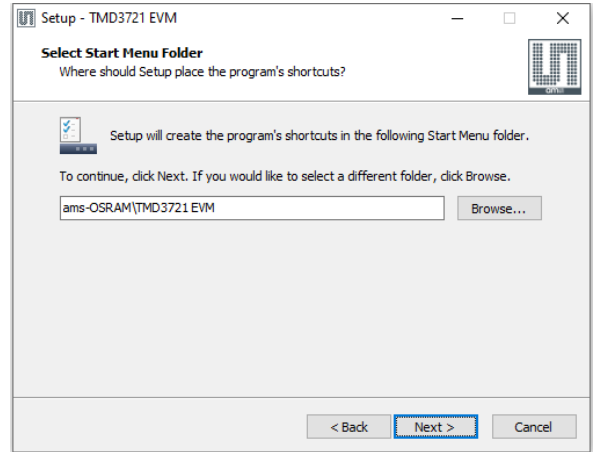


Figure 6:
Installation Progress

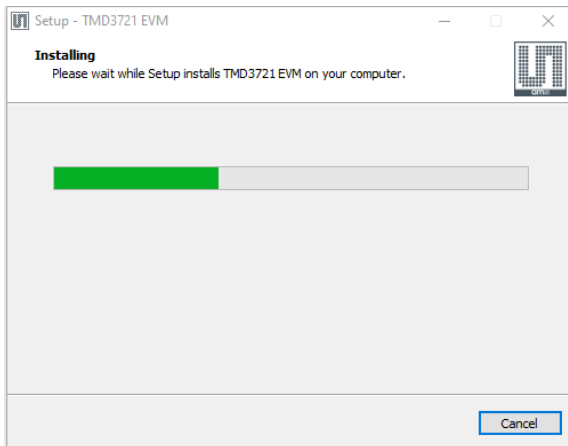


Figure 7:
Information Screen

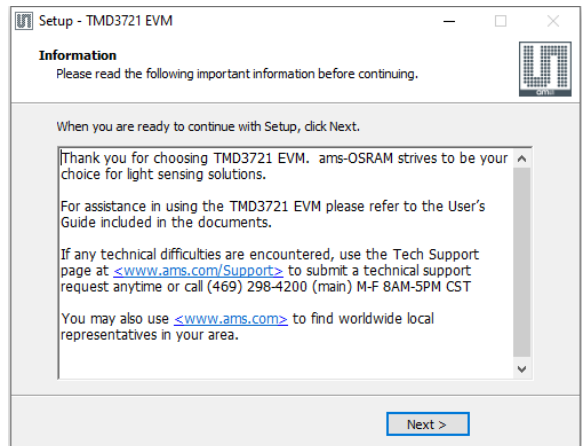
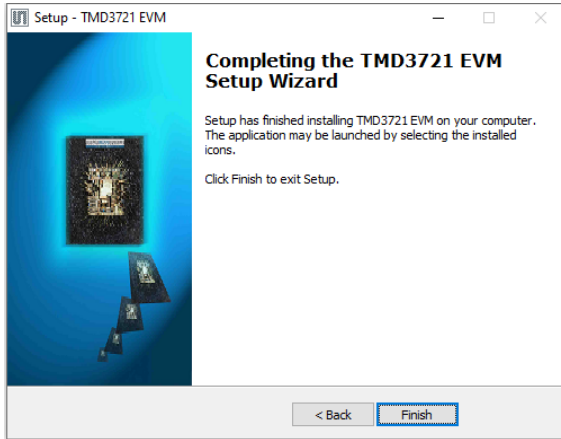


Figure 8:
Installation Completed Successfully



3 Connect Hardware

Plug the TMD3721 EVM Daughterboard into the Controller board (Figure 1). Always use ESD procedures when handling the EVM.

Using the enclosed USB cable, plug the micro-B connector into the EVM module. Using the other end of the cable, plug the USB A-connector into a USB port on the computer.

When the USB cable is connected, the green LED should light to indicate that power is being received via the USB interface, and the controller board processor is running. If the green LED does not light, check the USB cable connections; unplug the USB cable and try again. If the green LED still does not light, check the PC for USB error messages. When the software application is run, it will turn off the green LED.

4 Start the Application

To start the application select `ams-OSRAM > TMD3721 EVM > TMD3721 EVM` on the system menu. The default installation directory depending on the device and the operating system you are using is:

`C:\Program Files\ams-OSRAM\TMD3721 EVM (Windows 32-bit operating systems)`

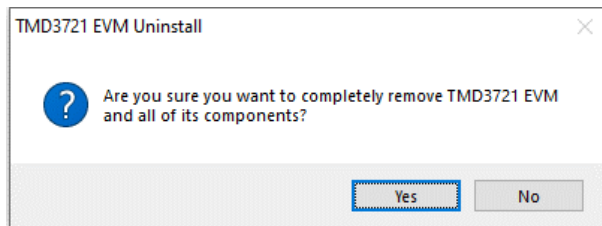
`C:\Program Files (x86)\ams-OSRAM\TMD3721 EVM (Windows 64-bit operating systems)`

A different install path may be selected by the user during the install (Figure 4). When started, the TMD3721 window will open on the PC and automatically connect to the hardware.

5 Uninstall Application

To remove the software from your computer, select ams-OSRAM > TMD3721 EVM > Uninstall TMD3721 EVM or use the Windows Control Panel.

Figure 9:
Remove Installation



Headquarters

ams-OSRAM AG
Tobelbader Strasse 30
8141 Premstaetten
Austria, Europe
Tel: +43 (0) 3136 500 0

Please visit our website at www.ams.com

Buy our products or get free samples online at www.ams.com/Products

Technical Support is available at www.ams.com/Technical-Support

Provide feedback about this document at www.ams.com/Document-Feedback

For sales offices, distributors and representatives go to www.ams.com/Contact

For further information and requests, e-mail us at ams_sales@ams.com

Copyright ams-OSRAM AG. Trademarks Registered. All rights reserved. The material herein may not be reproduced, adapted, merged, translated, stored, or used without the prior written consent of the copyright owner.

ams-OSRAM AG shall not be liable to recipient or any third party for any damages, including but not limited to personal injury, property damage, loss of profits, loss of use, interruption of business or indirect, special, incidental or consequential damages, of any kind, in connection with or arising out of the furnishing, performance or use of the technical data herein. No obligation or liability to recipient or any third party shall arise or flow out of ams-OSRAM AG rendering of technical or other services.