

# Product Document



# Quick Start Guide

**TMD2620 EVM**

**TMD2620 Proximity Sensor Evaluation Module**

**Version 1.0**



## Contents

1	Out of the Box .....	3
2	Software Installation .....	3
3	Connect Hardware .....	3
4	Start the Application .....	3
5	Contact and Support .....	5



## 1 Out of the Box

Each TMD2620 Evaluation Kit comes with the following components:

- Controller board v2.2-A
- TMD2620 Daughterboard
- USB Cable with A connector and mini B connector
- Flash Drive with Application Software and Documents



Figure 1 TMD2620 EVM Kit

## 2 Software Installation

Most PCs should have one or more Universal Serial Bus (USB) ports. Install the ams flash drive into an unused USB port. Double-click the **Setup.exe** file on the flash drive, or click Start -> Run and type E:\setup.exe and press Enter. IMPORTANT: Use the appropriate drive letter in the above command to install the software. Flash Drive will commonly be assigned the next available drive letter for example C: hard drive D: CD-ROM E: flash drive

The Setup Wizard will open and guide you through the installation of the TMD2620 host software, (Figures 2 through 8). To re-install, run the setup.exe program again. To remove the software from your computer (Figure 9), select ams -> TMD2620 EVM -> Uninstall TMD2620 EVM or use the Windows Control Panel.

## 3 Connect Hardware

Plug the TMD2620 Daughterboard into the Controller board. (Figure 1) Always use ESD procedures when handling the EVM.

Using the enclosed USB cable, plug the mini-B connector into the EVM module. Using the other end of the cable, plug the USB A-connector into a USB port on the computer.

## 4 Start the Application

To start the application select ams->TMD2620 EVM->TMD2620 EVM on the All Programs menu.



Figure 2 Welcome Screen

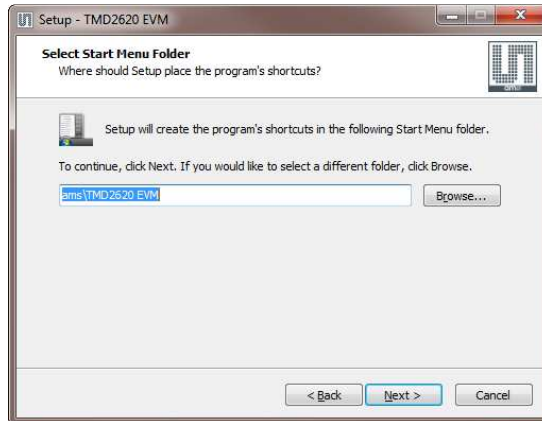


Figure 5 Select Start Menu Folder

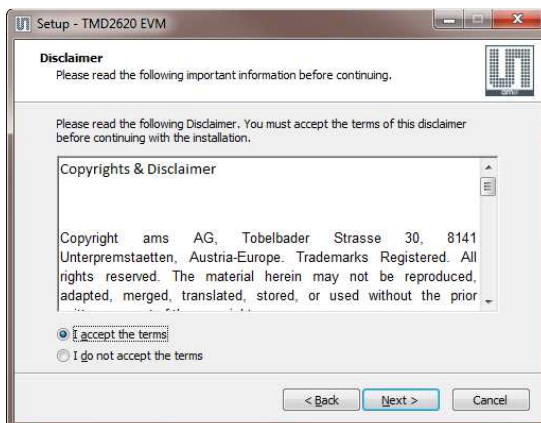


Figure 3 Liability Disclaimer

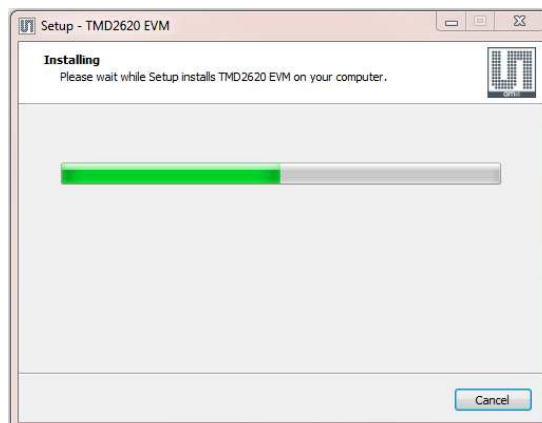


Figure 6 Installation in Progress

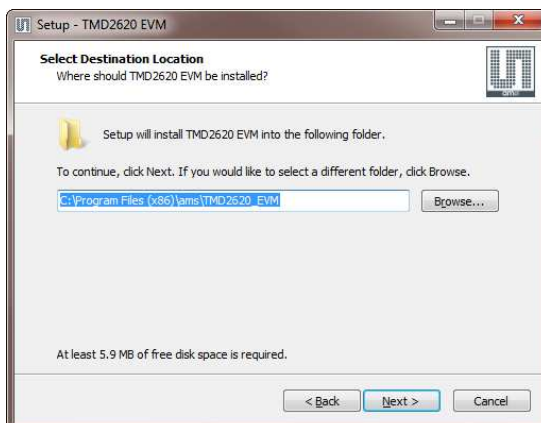


Figure 4 Select Installation Folder

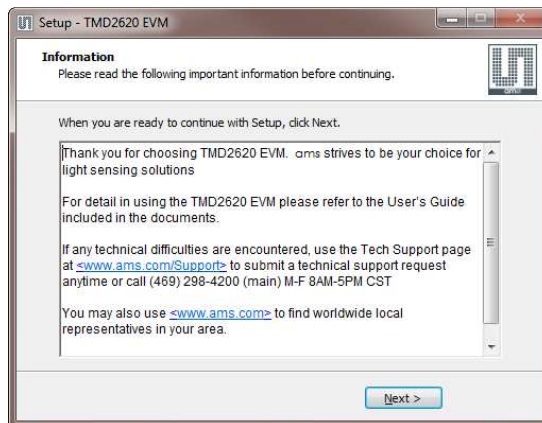


Figure 7 Information Screen

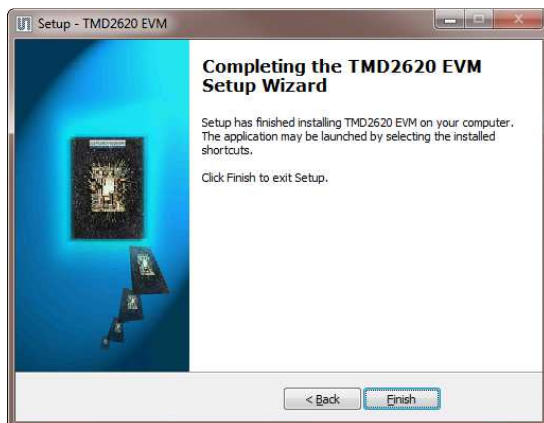


Figure 8 Installation Completed Successfully

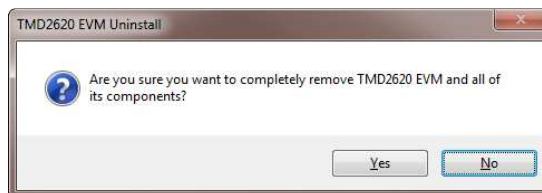


Figure 9 Remove Installation

## 5 Contact and Support

For detail in using the TMD2620 EVM please refer to the User's Guide included in the documents.

If any technical difficulties are encountered, use the Tech Support page at [www.ams.com/Support](http://www.ams.com/Support) to submit a technical support request anytime or call (469) 298-4200 (main) M-F 8AM-5PM CST

You may also use [www.ams.com](http://www.ams.com) to find worldwide local representatives in your area.