



CMOSIS / AWAIBA

is now

Member of the ams Group

The technical content of this CMOSIS / AWAIBA document is still valid.

Contact information:

Headquarters:

ams AG

Tobelbaderstrasse 30

8141 Premstaetten, Austria

Tel: +43 (0) 3136 500 0

e-Mail: ams_sales@ams.com

Please visit our website at www.ams.com

Thank you for choosing a MityCAM-C8000 from Critical Link.

The MityCAM-C8000 Hardware Setup Guide will introduce you to the hardware components of your camera. Once completed, you should be able to follow the Application Quick Start Guide (located on the included DVD), which will guide you through your first image acquisition using the MityCAM-C8000 and the MityViewer software application on a PC. Optionally the camera features a dual CameraLink configuration to interface with a number of capture cards (EPIX, National Instruments, etc.) for optimal throughput and complete functionality.

The MityCAM-CMV8000 contains the following:

Provided Hardware:

- MityCAM-C8000 Camera
 - CMOSIS CMV8000 sensor board
 - Cyclone V based CPU platform
 - Acquisition electronics
 - Dual CameraLink IO Interface
 - USB 2.0 Image Capture Capabilities (MityViewer Application)
 - Housing for C-mount lens
- USB Cable
- 100V-240V AC/DC 12V 1.2A (or similar) power adapter and connector
- Standard Lens (C-Mount)
- DVD with MityViewer Software and Users Guide DVD

Printed Documents:

- MityCAM-C8000 Hardware Setup Guide (this document)
- MityCAM-C8000 MityViewer Quick Start Guide

Software and Documentation:

- MityViewer 2.3.1 or above – PC (Windows) software
- MityCAM Camera Link Serial Control Panel – PC (Windows) software
- MityCAM-C8000 Datasheet
- MityCAM CamlinkPanel Users Guide
- MityCAM-C8000 Configuration Guide
- MityCAM-C8000 CameraLink Interface Document

Additional Hardware (not provided):

- IO Connector breakout cable (future support)
- Laptop / PC to host the MityViewer software or CameraLink frame grabber

Hardware Setup



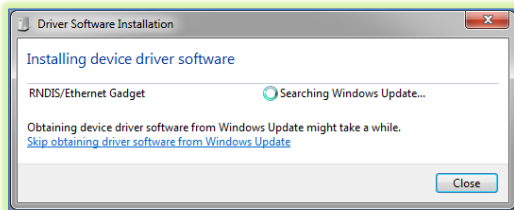
Figure 1 – MityCAM-CMV8000 Back Panel

- 1) Ensure that power to the AC/DC adapter is “off” prior to connecting it to the camera.
- 2) Insert the DC (4-pin) power connector into the “Power” connector on the back panel of the C8000 camera. (Identifier #1)
- 5) Thread supplied lens (included lens may vary) into front plate assembly; outlined with red below.

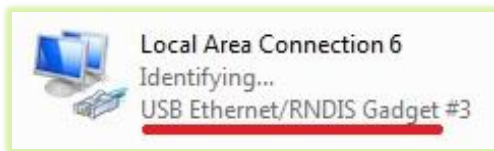


- 3) Note that there is an indicator light that can be seen through the fan/fan-grill.
- 4) Insert the USB cable into the Mini B type connector. (Identifier #2)
- 6) (Optionally) You can connect the MityCAM-C8000 camera through the CameraLink connectors (Identifier #3) for use with a capture card and software, not supplied. Steps 7 through 18 of this document are for USB image acquisition support only. Please consult the “CMV-8000 Camera Link Users Guide” for further details.

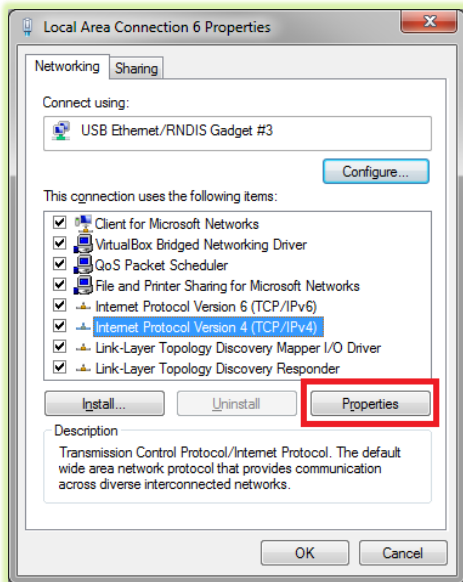
- 7) Connect the USB cable to a PC, RNDIS drivers will automatically be installed through Windows update on the PC if necessary. Drivers may be required for Windows XP.
- 8) Record Kit S/N (Identifier #4). This will be used later in the “MityViewer” application when connecting to the camera.
- 9) Plug the AC/DC power into an outlet. The fan will turn on immediately followed by a green status LED that can be seen through the fan grill.
- 10) The following steps were done with Win 7, but Win XP is similar.
- 11) Your PC should detect the USB RNDIS device (camera) and begin installing/downloading the driver.



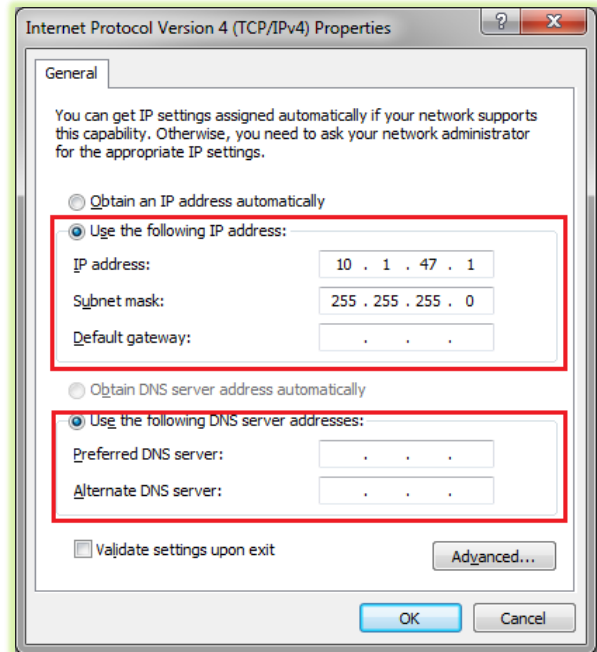
- 12) Open the Network Connections dialog; it may be found by selecting Control Panel -> Network and Internet -> Network Connections.
- 13) Select and ‘right-click’ the “USB Ethernet/RNDIS Gadget #X” icon (underlined in red) and then select “Properties” from the pop-up menu.



- 14) Select “Internet Protocol Version 4 (TCP/IPv4)” and then press the “Properties” button.



- 15) Enable static IP for the USB by NIC by setting the following parameters:
 - a. Select “Use the following IP address”
 - b. Enter IP address: 10.1.47.1
 - c. Enter subnet mask 255.255.255.0
 - d. Leave Default Gateway blank
 - e. Select “Use the following DNS server addresses” radio button and leave blank



- 16) The USB RNDIS device is now configured for use with the MityCAM-C8000. Note that you can connect to the camera using SSH and SCP protocols. The User Name is “root” and there is no password by default.
- 17) Note that the “I/O” connector (Identifier #5) is currently not used, but a flying lead assembly is available separately; please contact your Critical Link account representative for details.
- 18) Please continue on to the “MityCAM-C8000 MityViewer Quick Start Guide” to setup the software for your first image acquisition.

Thank you!

For more details visit
www.CriticalLink.com



MityCAM-C8000

Hardware Setup Guide

