

# Product Document



## User Guide

UG000457

# CMV50000

## Replacing Sensor in Critical Link Eval Kit

CMV50000\_xxxx\_EK

v1-00 • 2020-Feb-03

---

# Content Guide

<b>1</b>	<b>Introduction.....</b>	<b>3</b>	<b>3</b>	<b>Next Steps.....</b>	<b>7</b>
<b>2</b>	<b>Sensor Replacement Procedure... </b>	<b>4</b>	<b>4</b>	<b>Revision Information.....</b>	<b>8</b>
2.1	Opening the Camera.....	4	<b>5</b>	<b>Legal Information .....</b>	<b>9</b>
2.2	Removing the Sensor from the Socket .....	4			
2.3	Inserting a New Sensor .....	5			
2.4	Closing the Enclosure .....	6			

---

# 1 Introduction

---

This document explains how to replace the image sensor of a CMV50000 Critical Link eval kit. Make sure that every action explained in the document is performed with care and make sure not to damage the sensor or bend the sensor pins. Both mono and color sensors can be used for this guide.

---

## 2 Sensor Replacement Procedure

---

### 2.1 Opening the Camera

Before opening the camera, make sure power is shut down and all cables are disconnected from the camera module.

On one side of the lens there are 4 torx screws in the corners. Unscrew them carefully.

**Figure 1:**  
**Front Side of the Camera**

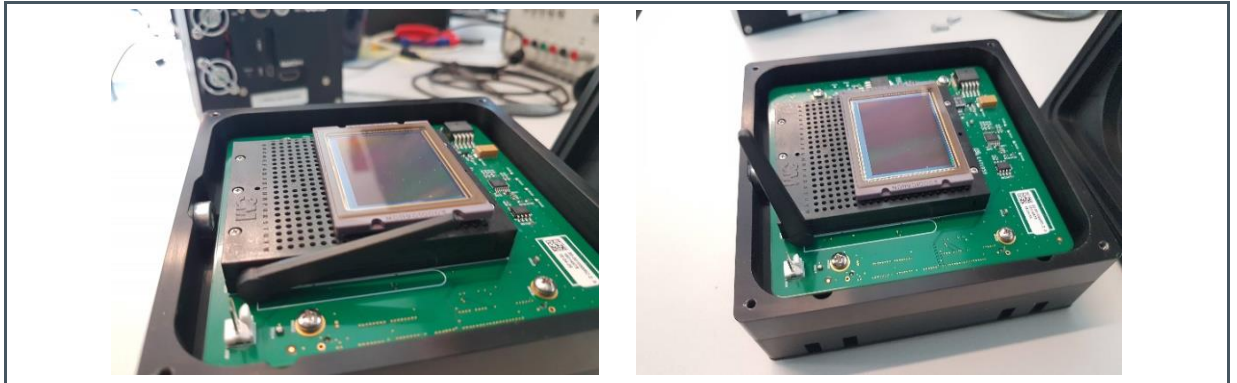


---

### 2.2 Removing the Sensor from the Socket

There is a lever located next to the socket. Carefully lift the lever as seen on the picture below. To remove the sensor from the socket, lift the sensor in a perfectly upwards motion. Make sure not to bend the sensor pins.

**Figure 2:**  
Lifting the Socket Lever

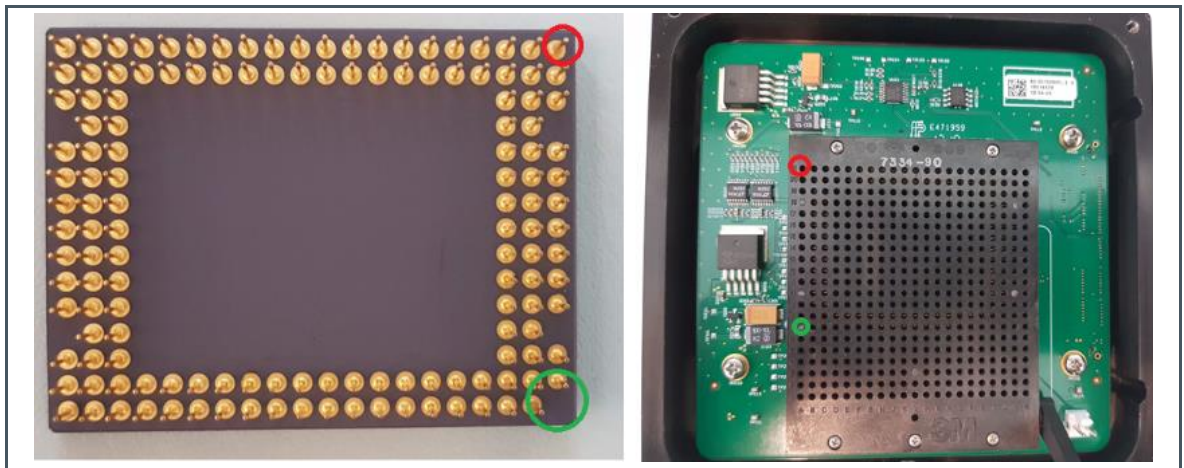


## 2.3 Inserting a New Sensor

After removing the sensor, a new sensor can be inserted.

It is very important to properly align the correct sensor pins with the socket. On the sensor, in one corner there is a missing pin. Use this pin to align the sensor with the missing hole in the socket, indicated with a green circle.

**Figure 3:**  
Sensor Pins Have to Be Aligned with the Sensor Board



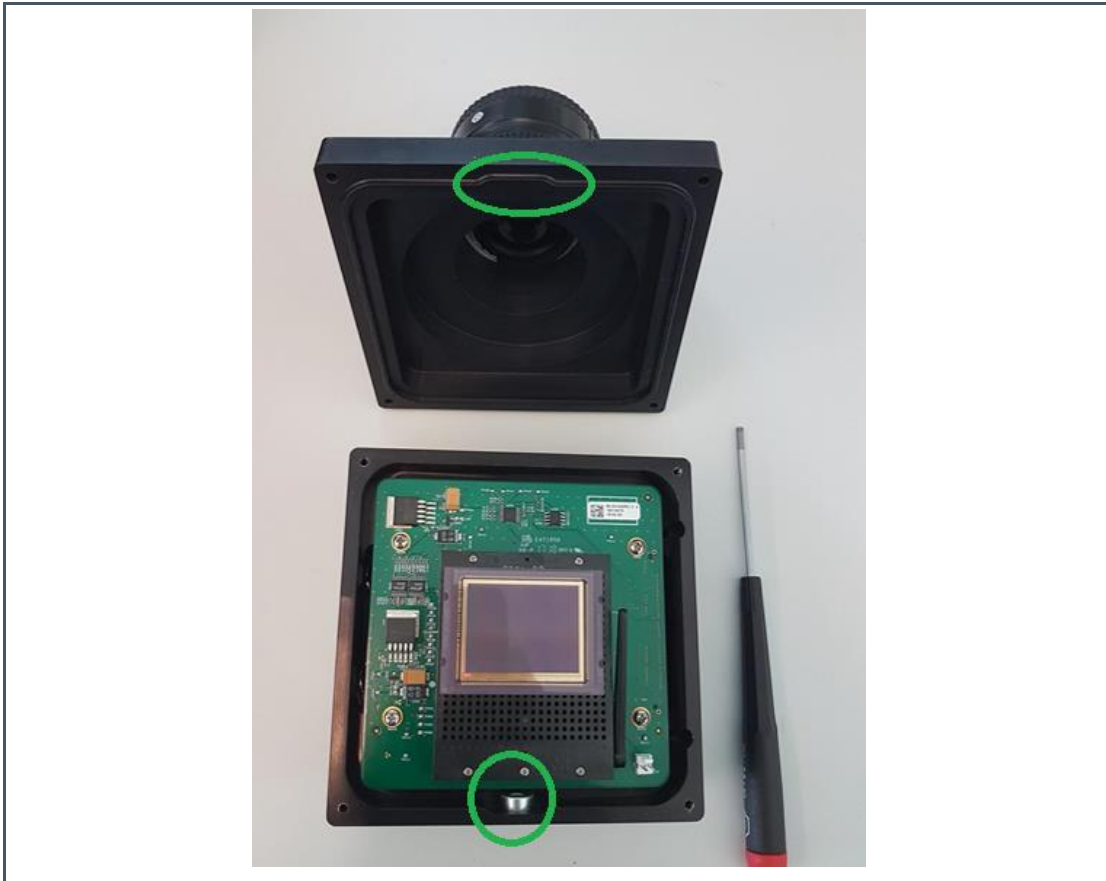
After the insertion of the sensor, the socket lever must be closed again. The action is the reverse of Figure 2.



## 2.4 Closing the Enclosure

The coverlid is not symmetrical. There is a notch on one side of the lid. Make sure this notch aligns with the screw on the sensor board as seen in Figure 4. Put the lid on the camera board and insert the screws.

**Figure 4:**  
When Closing the Camera Enclosure, Mind the Notch Position



---

## 3 Next Steps

---

After having replaced the sensor, the cables in the back of the camera can be plugged in again. Make sure to insert the power cord, USB adapter and optionally the HDMI cable. Then, turn on the power switch.

In the GenTL Viewer, click file -> close device if a device is still connected. Then, click open device and connect the CMV50000 camera kit again.

Click the play button to start streaming video. In case of a broken or bad looking video signal, make sure to adjust the pixel format.



# 4 Revision Information

Changes from previous version to current revision v1-00	Page
Initial version	

- Page and figure numbers for the previous version may differ from page and figure numbers in the current revision.
- Correction of typographical errors is not explicitly mentioned.

## 5 Legal Information

### Copyrights & Disclaimer

Copyright ams AG, Tobelbader Strasse 30, 8141 Premstaetten, Austria-Europe. Trademarks Registered. All rights reserved. The material herein may not be reproduced, adapted, merged, translated, stored, or used without the prior written consent of the copyright owner.

Demo Kits, Evaluation Kits and Reference Designs are provided to recipient on an "as is" basis for demonstration and evaluation purposes only and are not considered to be finished end-products intended and fit for general consumer use, commercial applications and applications with special requirements such as but not limited to medical equipment or automotive applications. Demo Kits, Evaluation Kits and Reference Designs have not been tested for compliance with electromagnetic compatibility (EMC) standards and directives, unless otherwise specified. Demo Kits, Evaluation Kits and Reference Designs shall be used by qualified personnel only.

ams AG reserves the right to change functionality and price of Demo Kits, Evaluation Kits and Reference Designs at any time and without notice.

Any express or implied warranties, including, but not limited to the implied warranties of merchantability and fitness for a particular purpose are disclaimed. Any claims and demands and any direct, indirect, incidental, special, exemplary or consequential damages arising from the inadequacy of the provided Demo Kits, Evaluation Kits and Reference Designs or incurred losses of any kind (e.g. loss of use, data or profits or business interruption however caused) as a consequence of their use are excluded.

ams AG shall not be liable to recipient or any third party for any damages, including but not limited to personal injury, property damage, loss of profits, loss of use, interruption of business or indirect, special, incidental or consequential damages, of any kind, in connection with or arising out of the furnishing, performance or use of the technical data herein. No obligation or liability to recipient or any third party shall arise or flow out of ams AG rendering of technical or other services.

### RoHS Compliant & ams Green Statement

**RoHS Compliant:** The term RoHS compliant means that ams AG products fully comply with current RoHS directives. Our semiconductor products do not contain any chemicals for all 6 substance categories plus additional 4 substance categories (per amendment EU 2015/863), including the requirement that lead not exceed 0.1% by weight in homogeneous materials. Where designed to be soldered at high temperatures, RoHS compliant products are suitable for use in specified lead-free processes.

**ams Green (RoHS compliant and no Sb/Br/Cl):** ams Green defines that in addition to RoHS compliance, our products are free of Bromine (Br) and Antimony (Sb) based flame retardants (Br or Sb do not exceed 0.1% by weight in homogeneous material) and do not contain Chlorine (Cl) not exceed 0.1% by weight in homogeneous material).

**Important Information:** The information provided in this statement represents ams AG knowledge and belief as of the date that it is provided. ams AG bases its knowledge and belief on information provided by third parties, and makes no representation or warranty as to the accuracy of such information. Efforts are underway to better integrate information from third parties. ams AG has taken and continues to take reasonable steps to provide representative and accurate information but may not have conducted destructive testing or chemical analysis on incoming materials and chemicals. ams AG and ams AG suppliers consider certain information to be proprietary, and thus CAS numbers and other limited information may not be available for release.

### Headquarters

ams AG  
Tobelbader Strasse 30  
8141 Premstaetten  
Austria, Europe  
Tel: +43 (0) 3136 500 0

Please visit our website at [www.ams.com](http://www.ams.com)

Buy our products or get free samples online at [www.ams.com/Products](http://www.ams.com/Products)

Technical Support is available at [www.ams.com/Technical-Support](http://www.ams.com/Technical-Support)

Provide feedback about this document at [www.ams.com/Document-Feedback](http://www.ams.com/Document-Feedback)

For sales offices, distributors and representatives go to [www.ams.com/Contact](http://www.ams.com/Contact)

For further information and requests, e-mail us at [ams\\_sales@ams.com](mailto:ams_sales@ams.com)